

Enroll iPhone Device with Intune

1



Open the App Store, search for 'Company Portal' and install



2

A screenshot of the Microsoft Sign in screen. It features the Microsoft logo at the top left, followed by the text 'Sign in'. Below this is a text input field containing the email address 'first.last@androsysinc.com'. Underneath the input field is a link that says 'Can't access your account?'. At the bottom of the screen are two buttons: 'Back' and 'Next'.

Choose Sign In, then enter your ASI email address and password

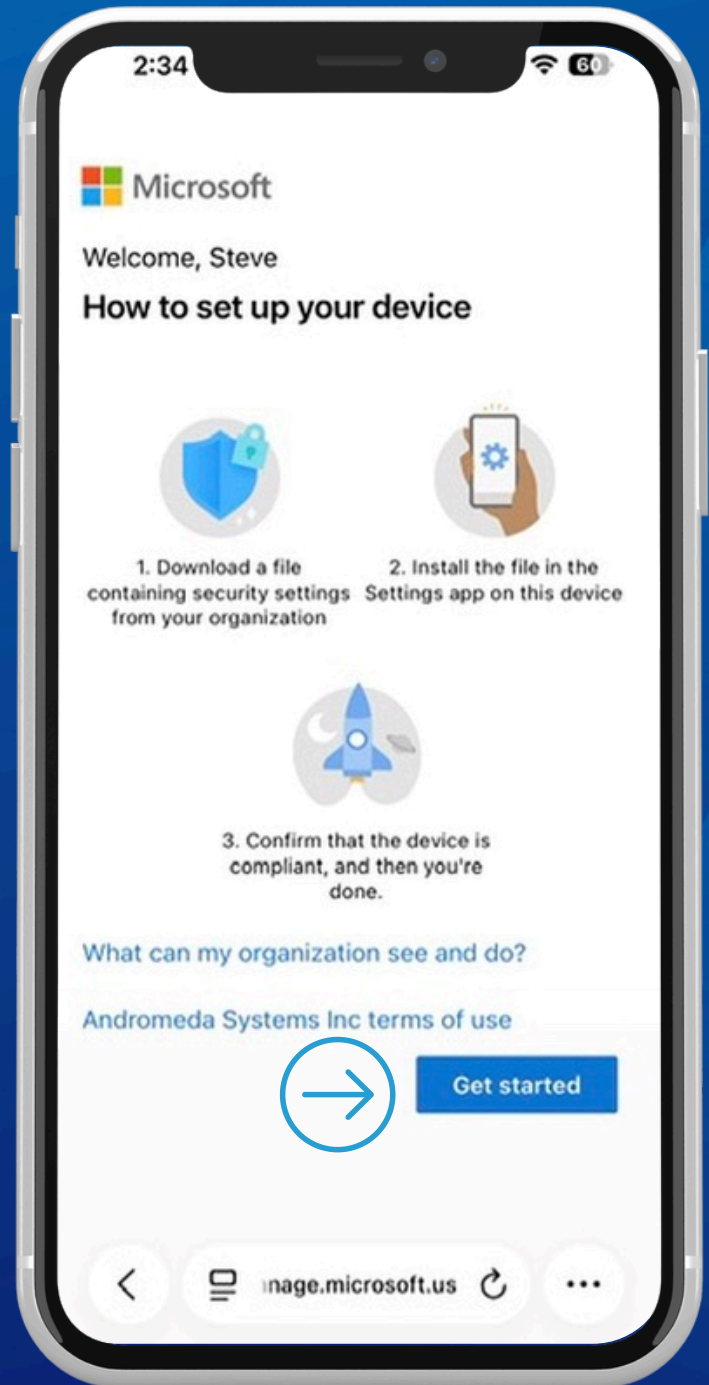
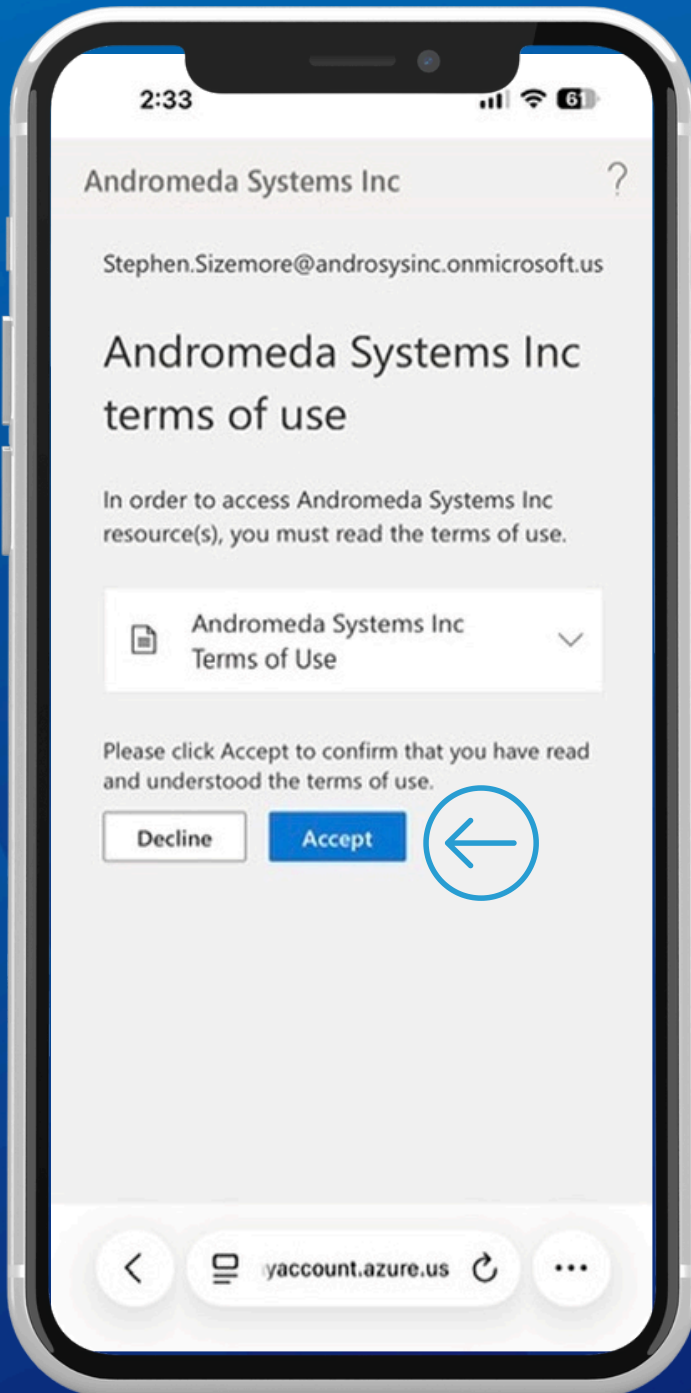


3

Review the privacy policy,
then click Accept

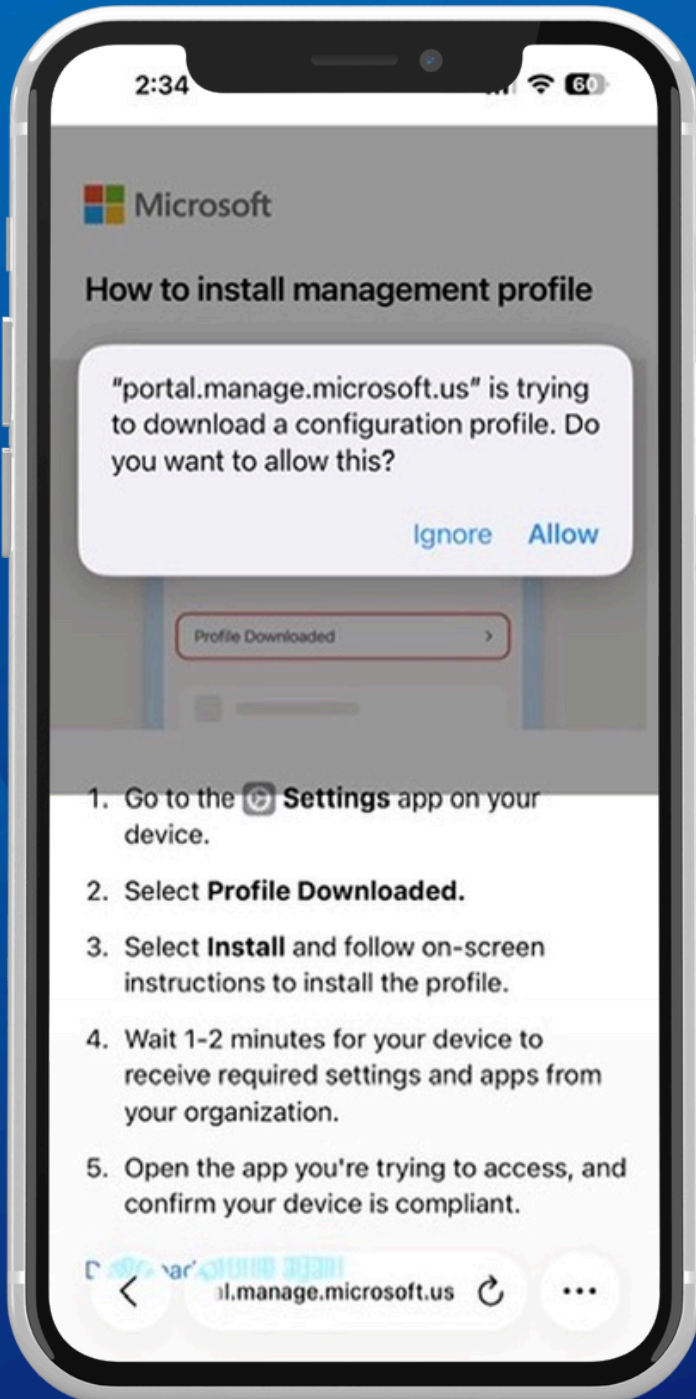
4

Review the privacy policy,
then select Get Started



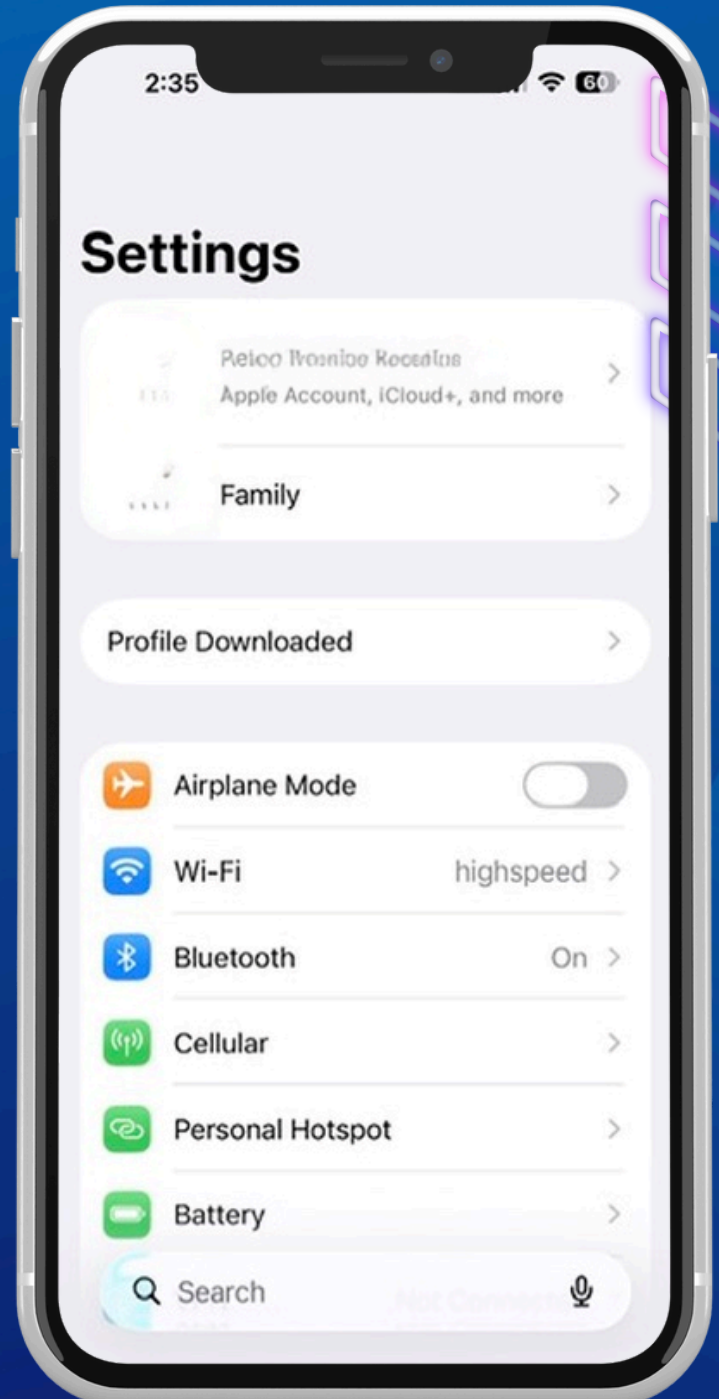
5

Choose allow then follow prompts



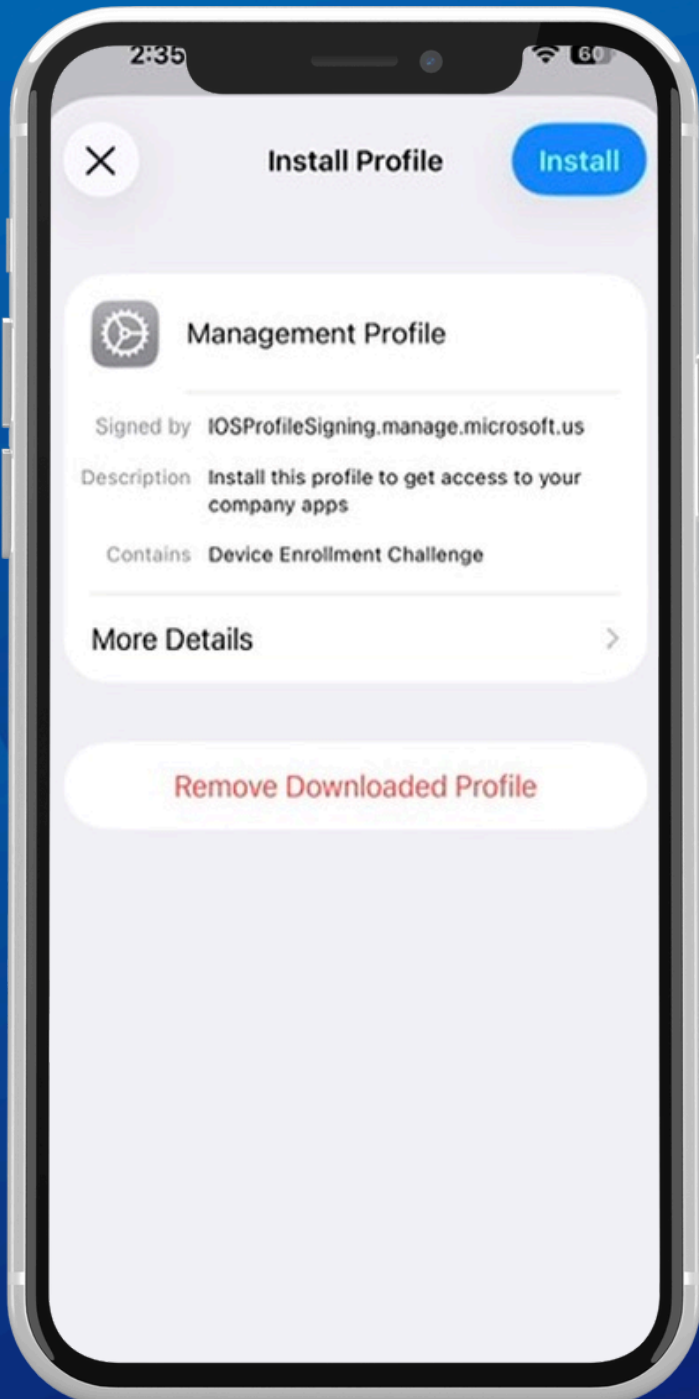
6

Choose allow then follow prompts



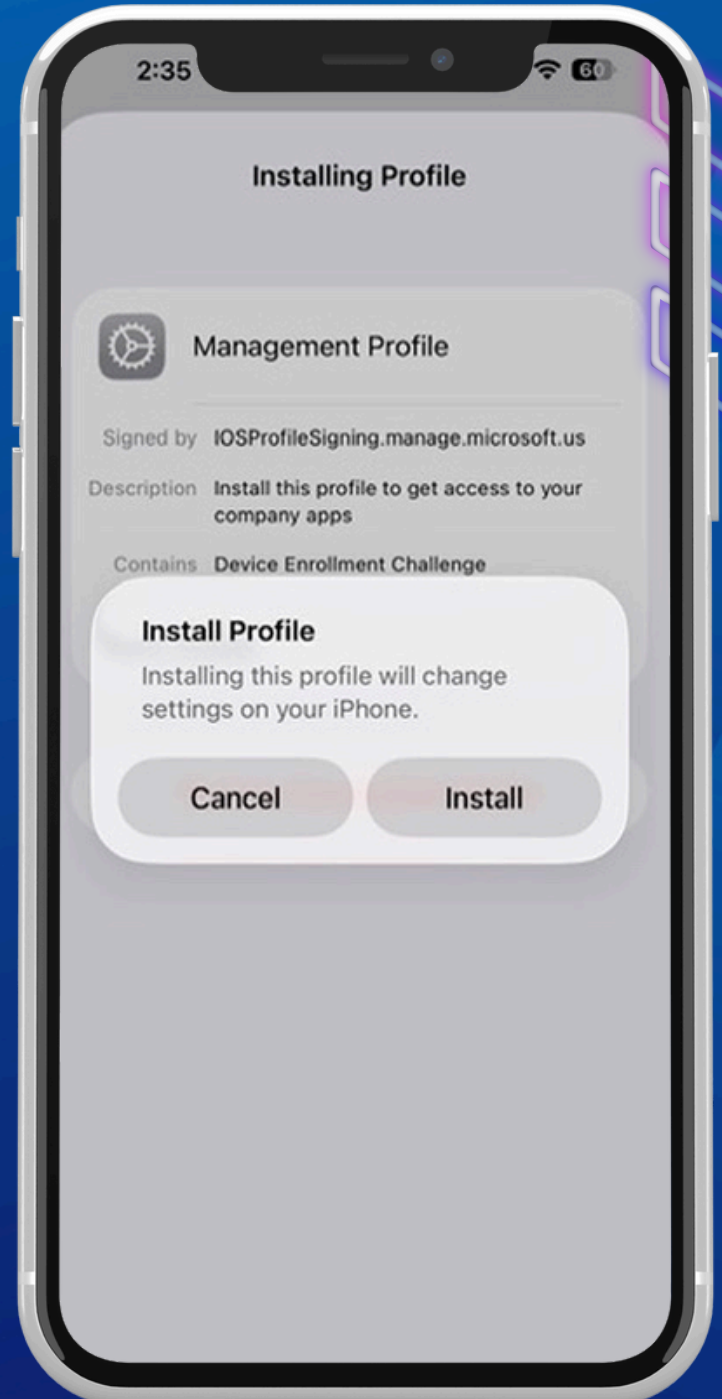
7

Choose allow then follow prompts



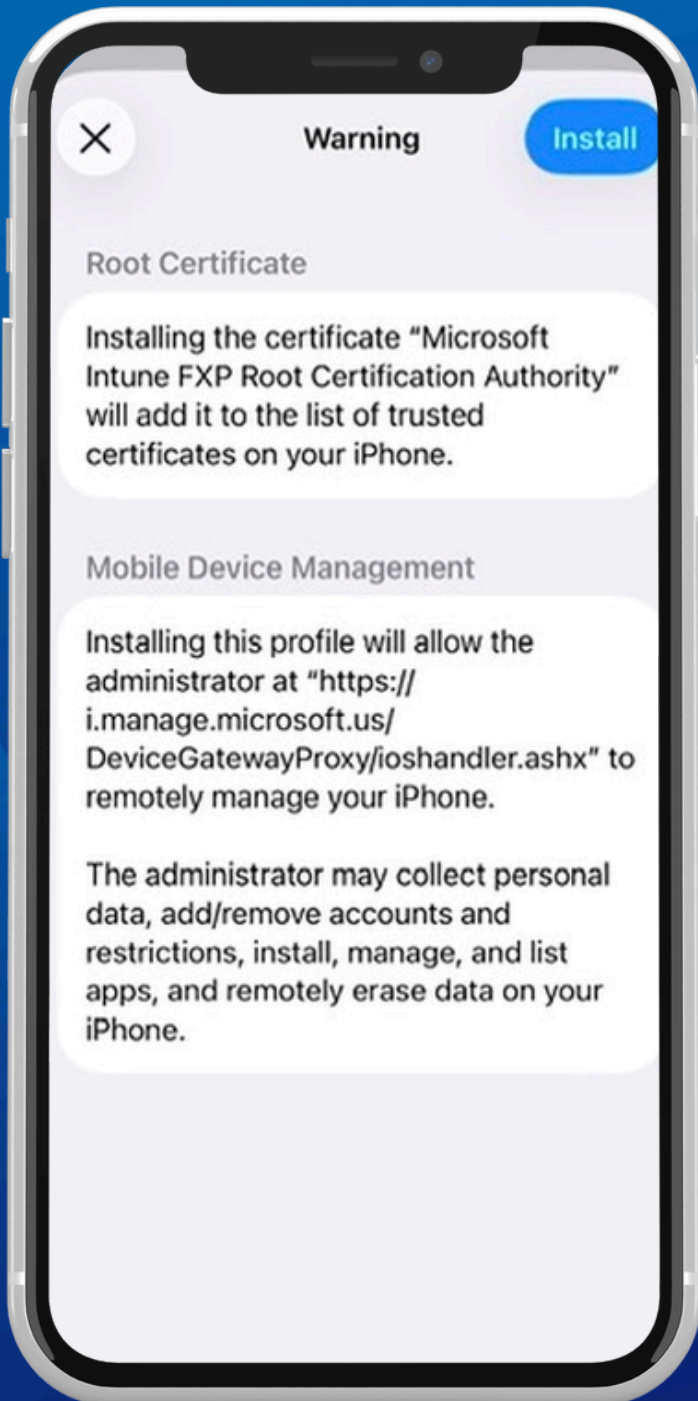
8

Choose allow then follow prompts



9

Choose allow then follow prompts



10

Choose allow then follow prompts



11

